

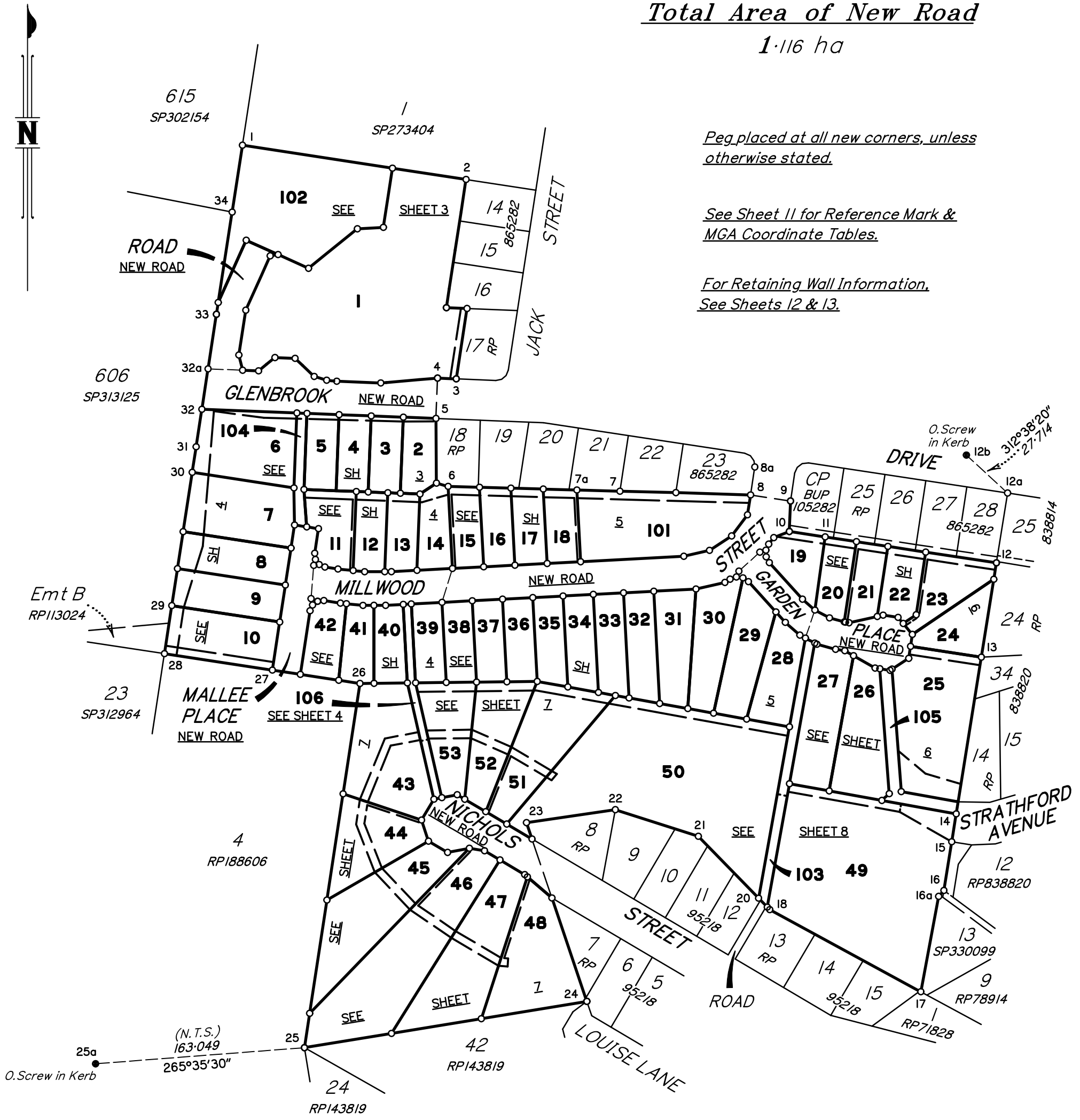
Total Area of New Road

1.116 ha

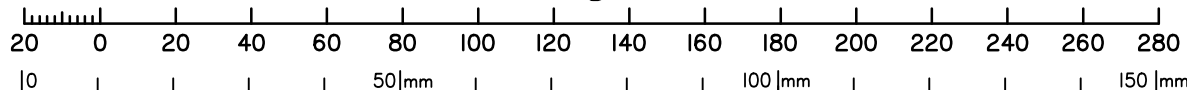
Peg placed at all new corners, unless otherwise stated.

See Sheet 11 for Reference Mark & MGA Coordinate Tables.

For Retaining Wall Information, See Sheets 12 & 13.



Scale 1:2000 - Lengths are in metres.



**Plan of Lots 1-53 & 101-106
& Easements (as described on
Sheet 2)**

Cancelling Lot 2 on SP330099

LOCAL GOVERNMENT: SUNSHINE COAST REGIONAL LOCALITY: NAMBOUR

Meridian: MGA Zone 56 Vide CORS

Survey Records: No

Scale: 1:2000

Format: STANDARD



SP336371

DTS GROUP QLD PTY LTD (ACN 010 000 843) hereby certify that the land comprised in this plan was surveyed by the corporation, by Sam Matthew Woodland, Surveying Associate, for whose work the corporation accepts responsibility, under the supervision of Anthony John Valentine, Cadastral Surveyor, and that the plan is accurate, that the said survey was performed in accordance with the Survey and Mapping Infrastructure Act 2003 and Surveyors Act 2003 and associated Regulations and Standards and that the said survey was completed on 14/11/2023.



[Signature]
Director/Authorised Signatory

[Signature]
Director/Authorised Signatory

Date: 14/11/2023

SSC210020

SS210020L1.DWG

**WARNING : Folded or Mutilated Plans will not be accepted.
Plans may be rolled.
Information may not be placed in the outer margins.**

(Dealing No.)

4. Lodged by

(Include address, phone number, reference, and Lodger Code)

I. Existing		Created		
Title Reference	Description	New Lots	Road	Secondary Interests
51273868	Lot 2 on SP330099	I-53 & I01-106	New Rd	Emts A-AZ & Emts AA-AT

MORTGAGE ALLOCATIONS

Mortgage	Lots Fully Encumbered	Lots Partially Encumbered
721465858	I-53 & I01-106	

BENEFIT EASEMENT ALLOCATIONS

Easement	Lots Fully Benefited	Lots Partially Benefited
721405720	I-53 & I01-106	

Easement A on RP865281 Dealing 700241011 to be surrendered prior to the registration of this plan.

Reinstatement Report

- Plans Searched: IS302867, SP273404, RP865281, RP838814, RP865282, RP188606, RP838080 & SP330099.
- Station 17 was fixed by OIP.
- Station 16a was fixed at original dimensions from station 16.
- The remainder of this plan is a continuation on from IS302867 & follows the reinstatement on that plan.
- OPM 105142 was disturbed during construction. The civil contractor removed the PM and reset it in new concrete, hence the new reference.

and Plan of Easements

A-D in Lots 2-5 Respectively, E in Lot I04, F-J in Lots 6-10 Respectively, K in Lot I0, L-S in Lots 11-18 Respectively, T in Lot I01, U-Y in Lots 19-23 Respectively, Z & AA in Lot 25, AB & AC in Lot 49, AD & AK in Lot 50, AE & AJ in Lot 51, AF & AI in Lot 52, AG & AH in Lot 53, AL-AQ in Lots 43-48 Respectively, AR in Lot I03, AS in Lot I06 and AT in Lot I


I-53 & I01-106	Por 21
Lots	Orig

2. Orig Grant Allocation :

3. References :

Dept File :
Local Govt : POS24/0007
Surveyor : SSC210020

5. Passed & Endorsed :

By: DTS GROUP QLD PTY LTD
Date: ~~12/10/2023~~ ~~16/10/2023~~ 21/11/2023
Signed:  23/01/2024
Designation: CADASTRAL SURVEYOR

6. Building Format Plans only.

I certify that :
* As far as it is practical to determine, no part of the building shown on this plan encroaches onto adjoining lots or road;
* Part of the building shown on this plan encroaches onto adjoining * lots and road

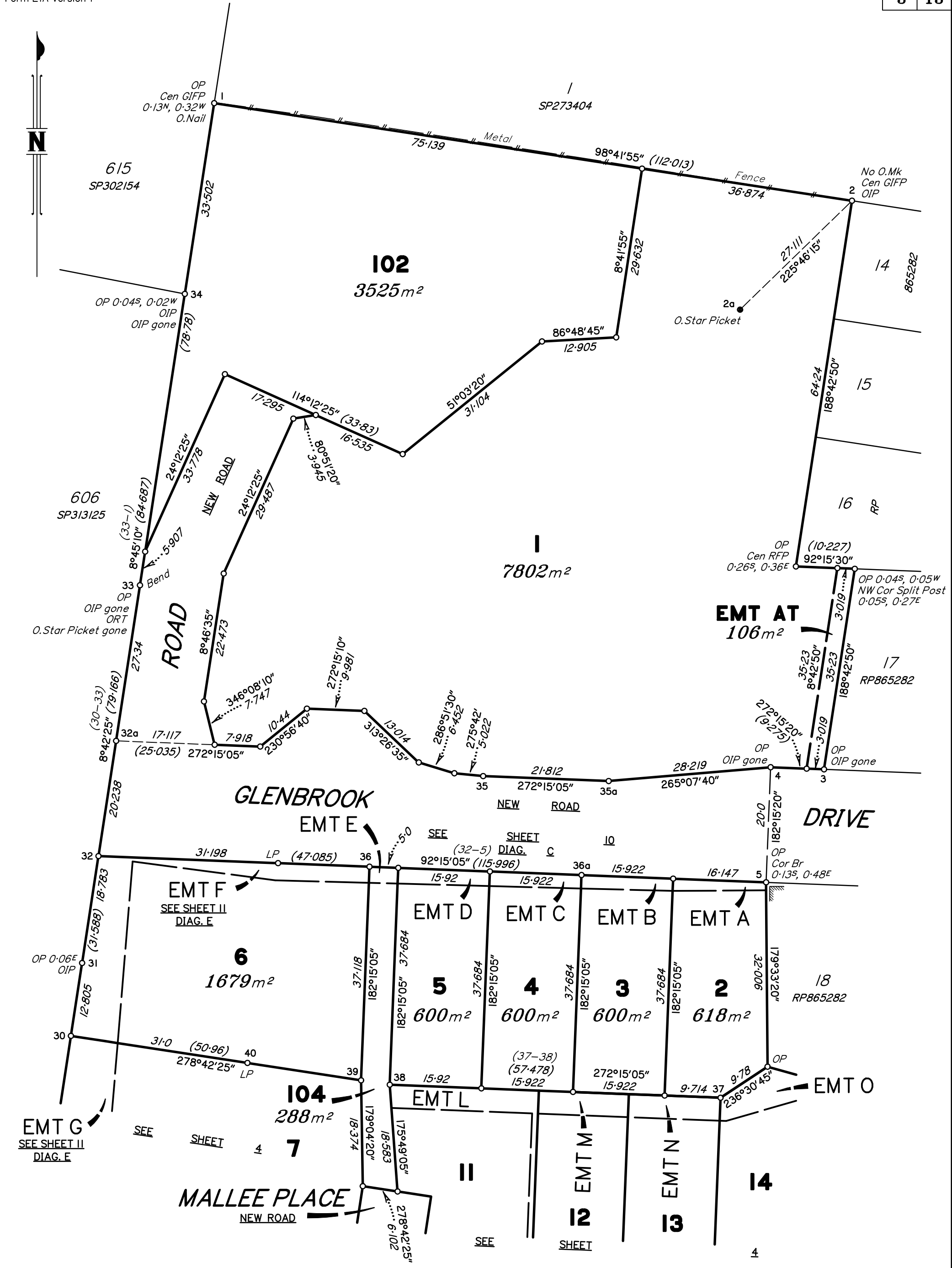
.....
Cadastral Surveyor/Director* Date
*delete words not required

7. Lodgement Fees :

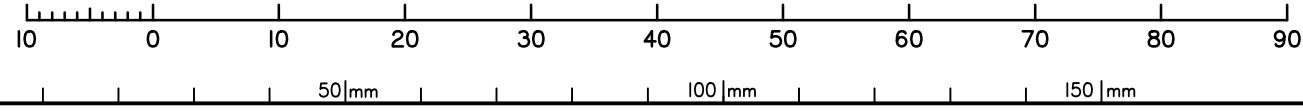
Survey Deposit \$
Lodgement \$
.....New Titles \$
Photocopy \$
Postage \$
TOTAL \$

8. Insert Plan Number **SP336371**

S21002011.DWG



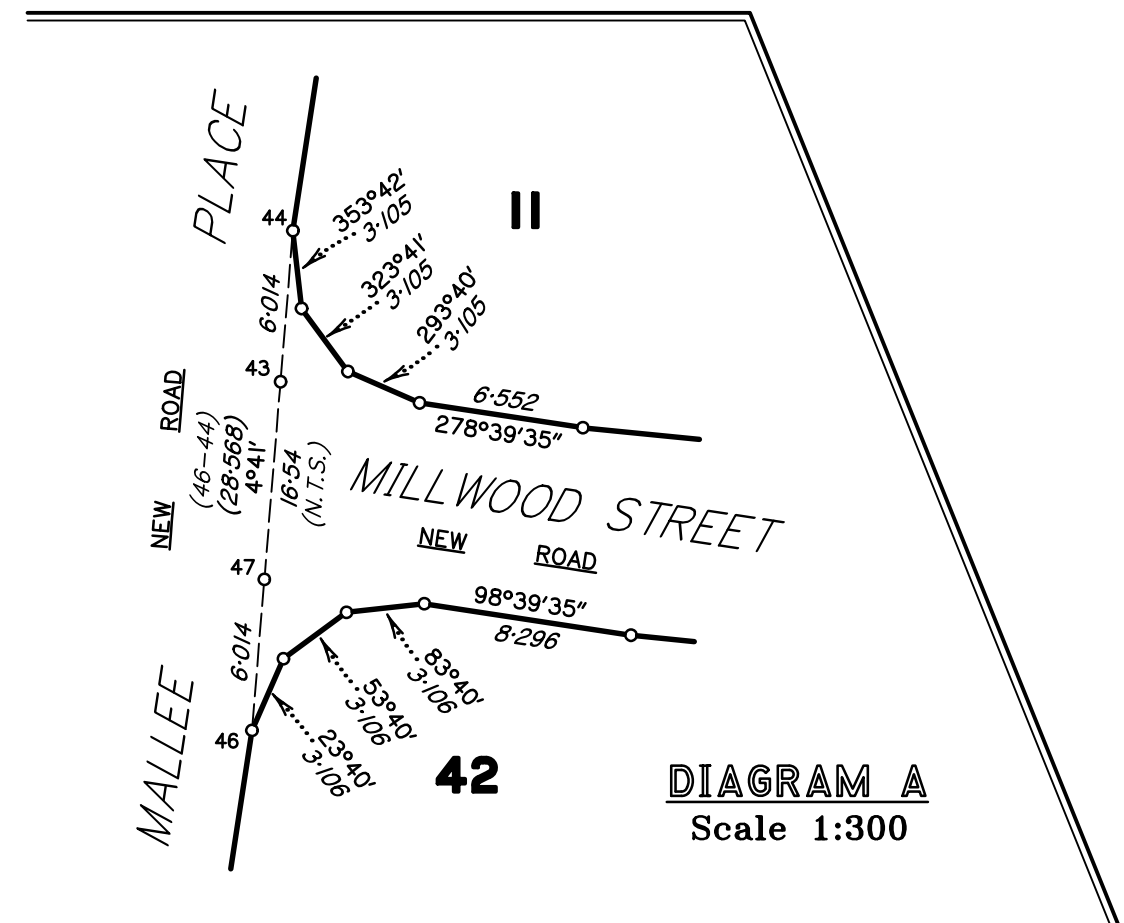
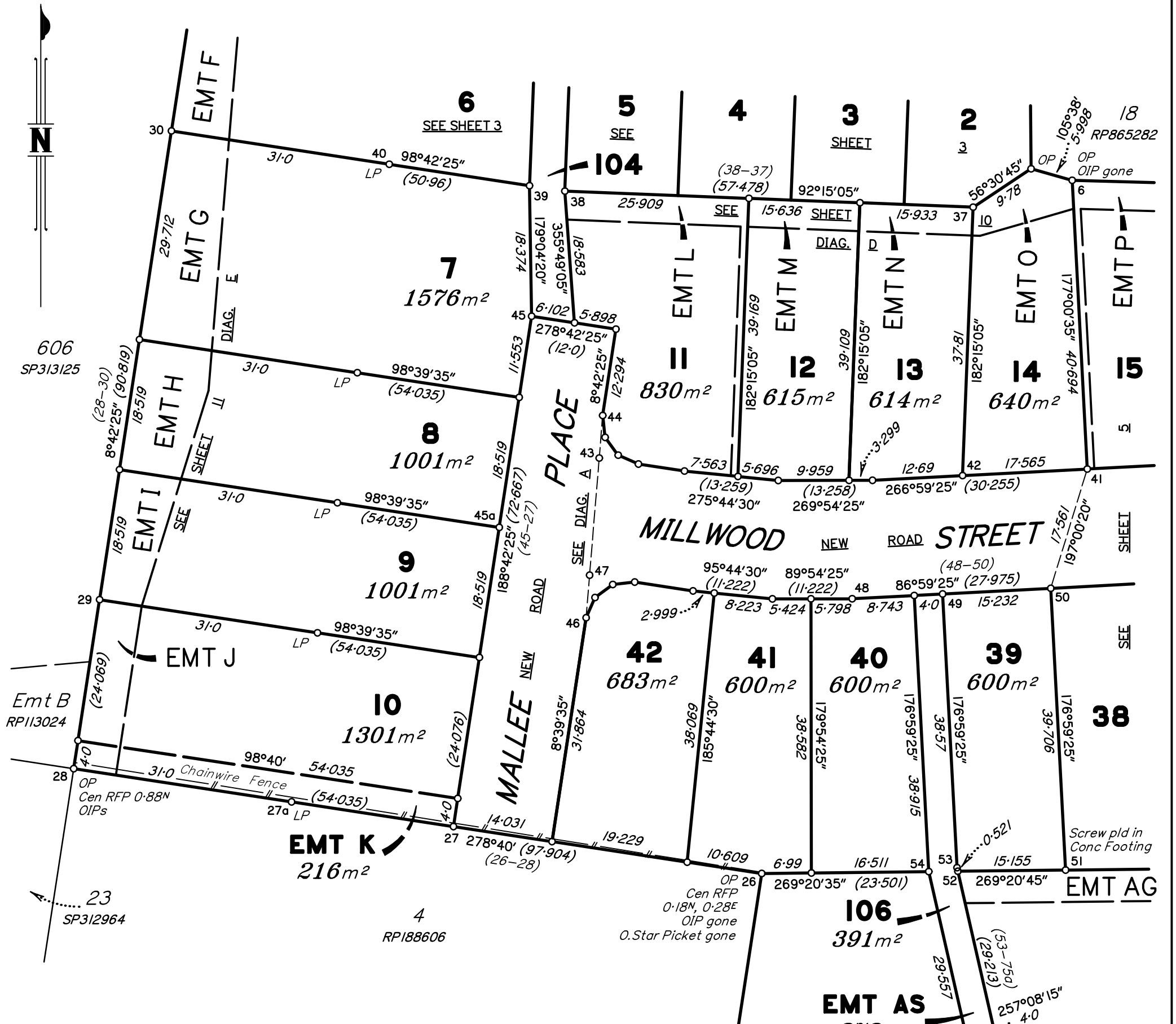
Scale 1:600 - Lengths are in metres.



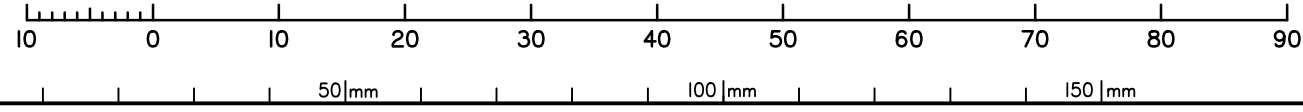
State copyright reserved.

Insert Plan Number **SP336371**

S2100201.DWG



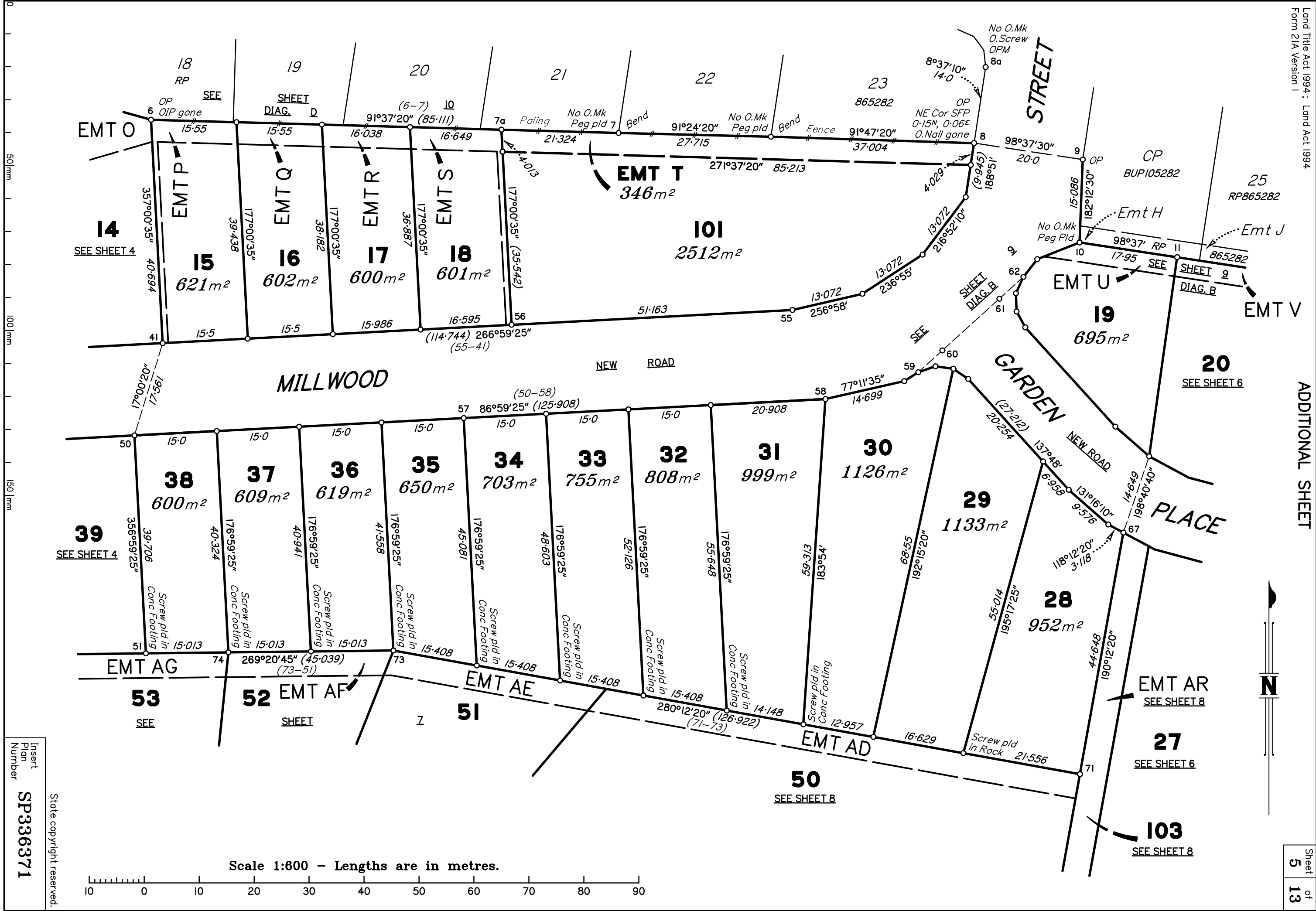
Scale 1:600 - Lengths are in metres.



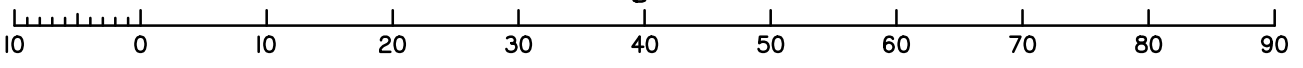
State copyright reserved.

Insert Plan Number **SP336371**

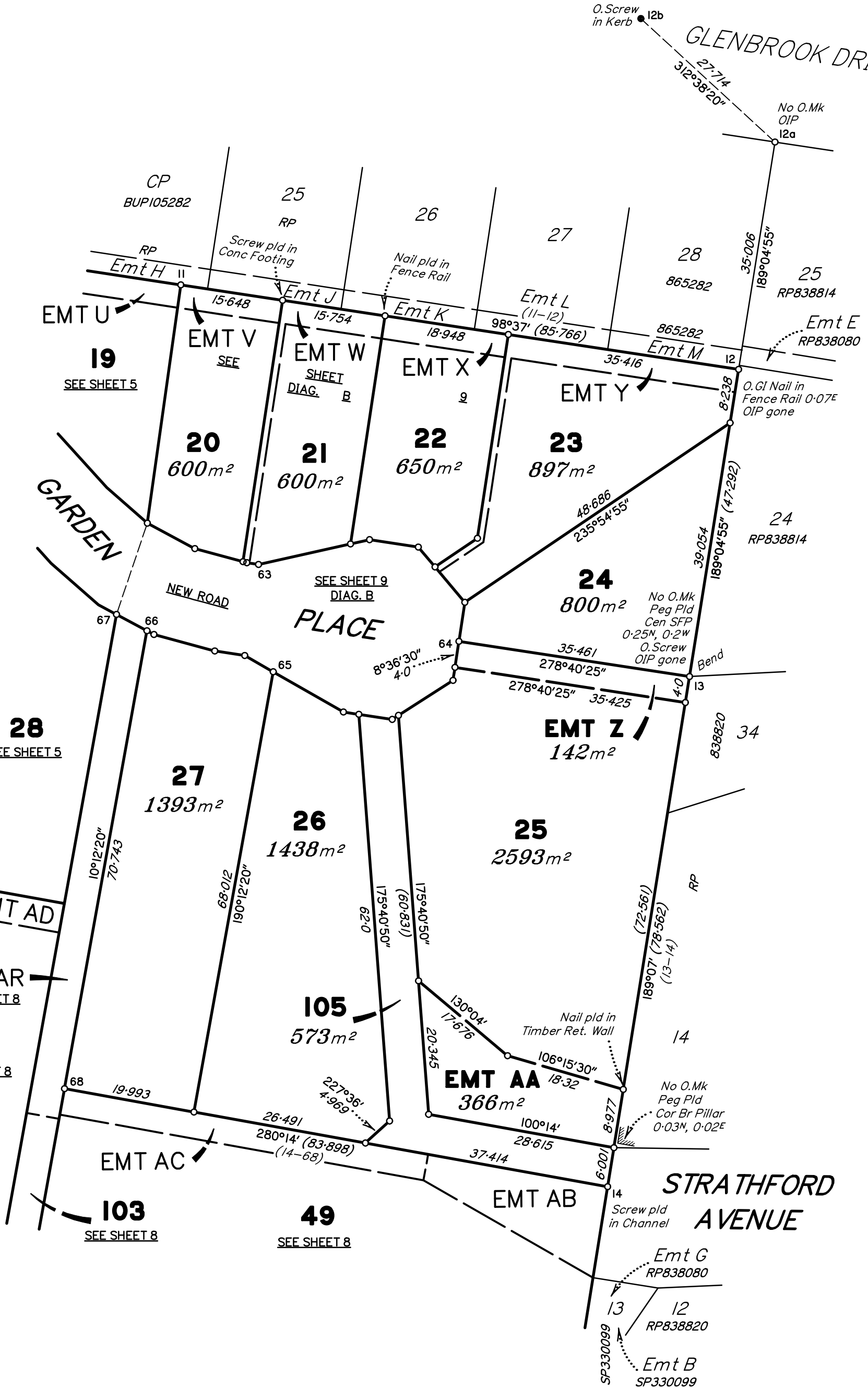
SP2100201.DWG



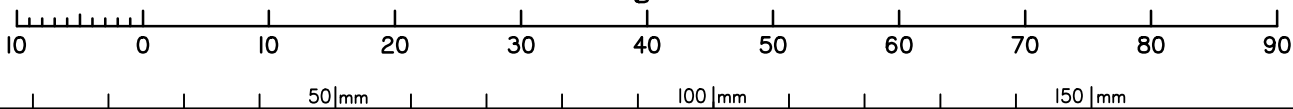
Scale 1:600 - Lengths are in metres.



Insert
Plan
Number
SP336371
State copyright reserved.



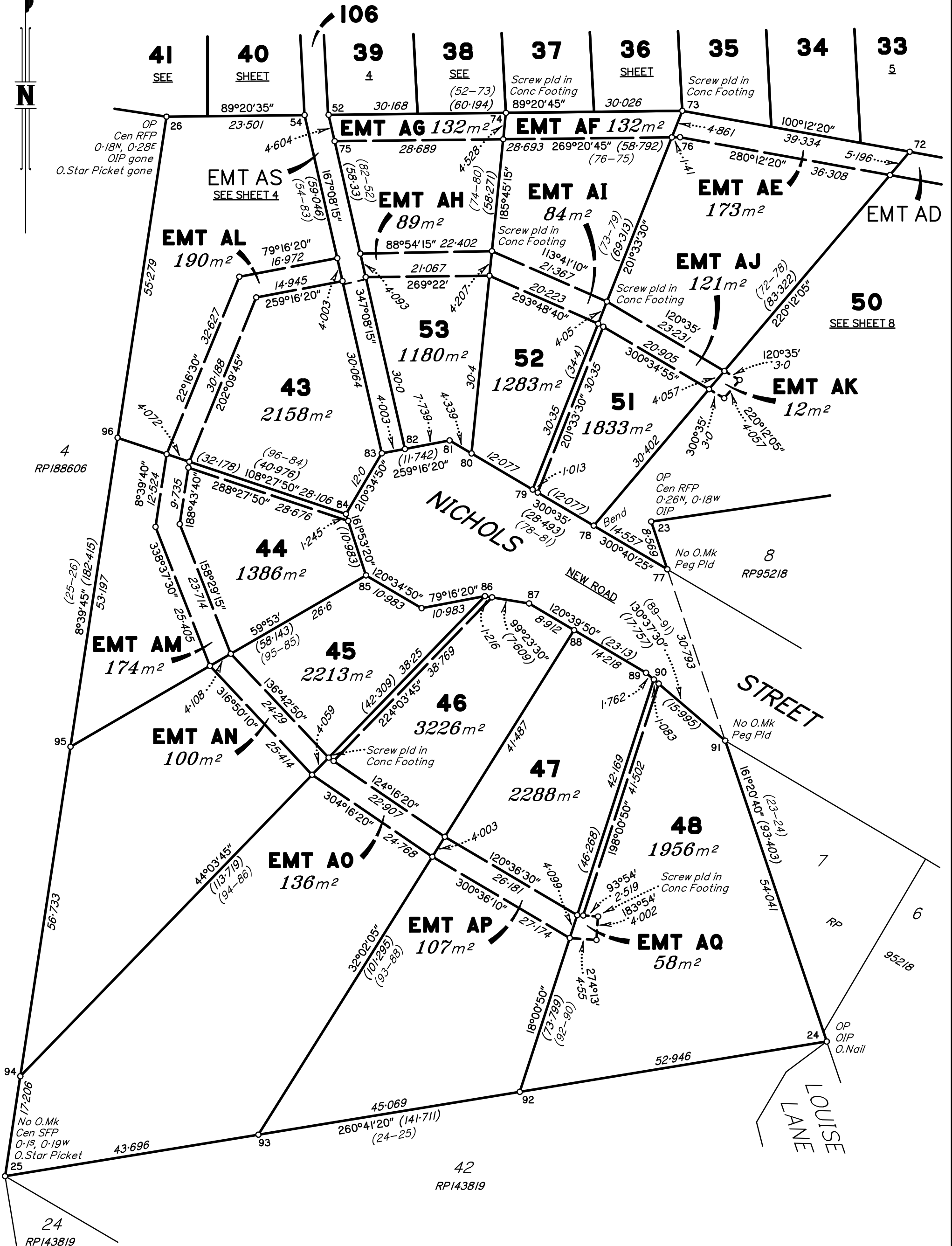
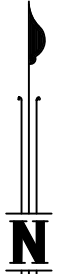
Scale 1:600 - Lengths are in metres.



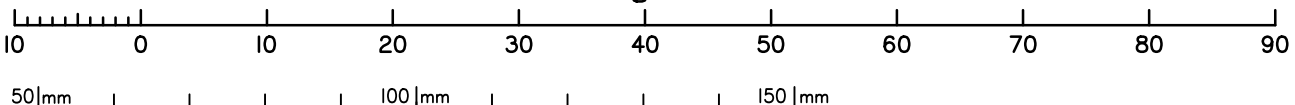
State copyright reserved.

Insert Plan Number **SP336371**

SP330099.DWG



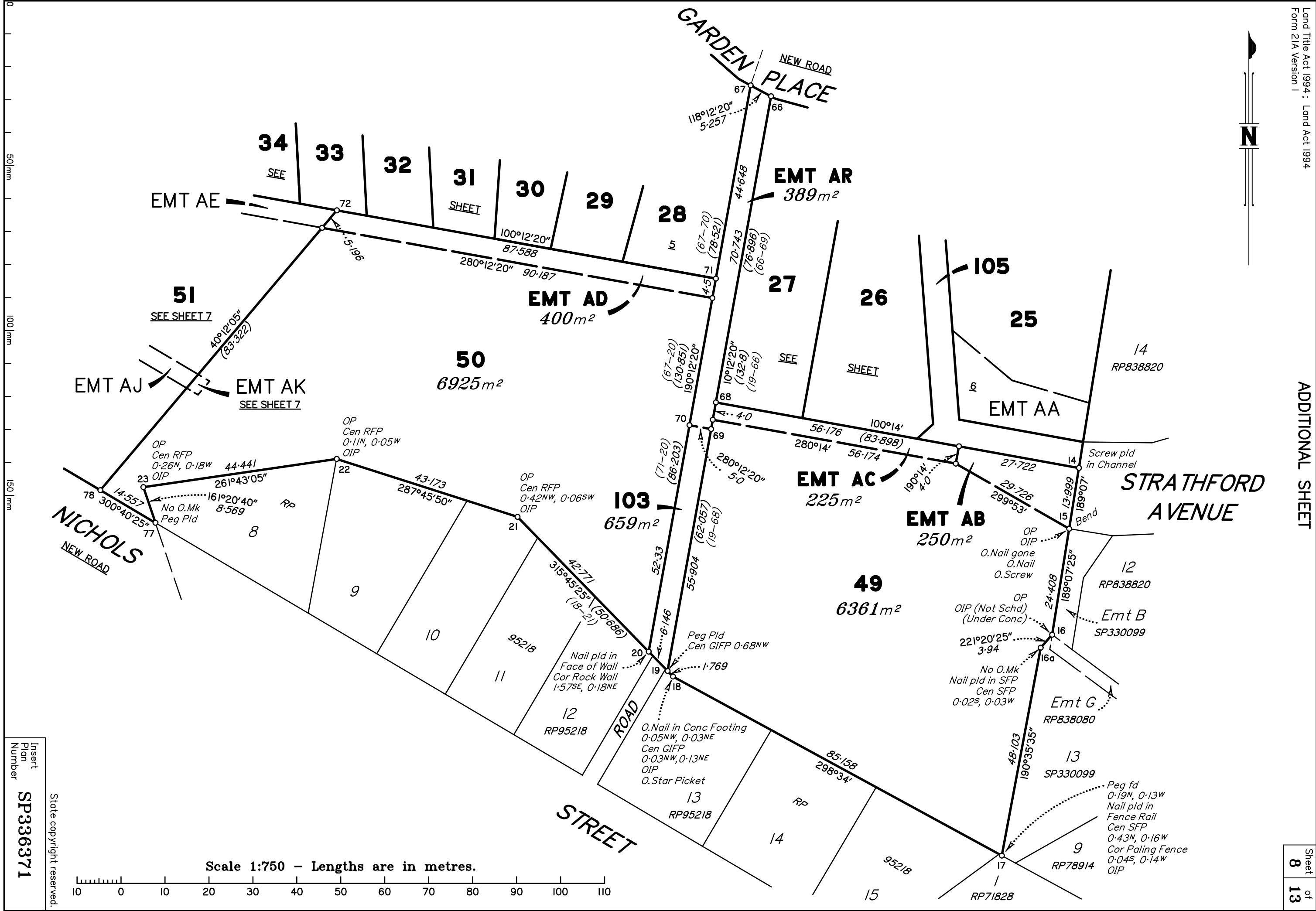
Scale 1:600 - Lengths are in metres.



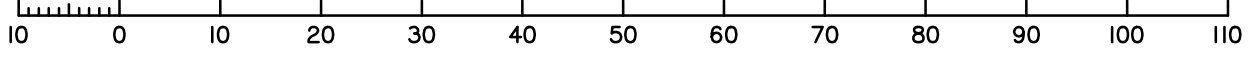
State copyright reserved.

Insert Plan Number **SP336371**

SP100201.DWG



Scale 1:750 - Lengths are in metres.

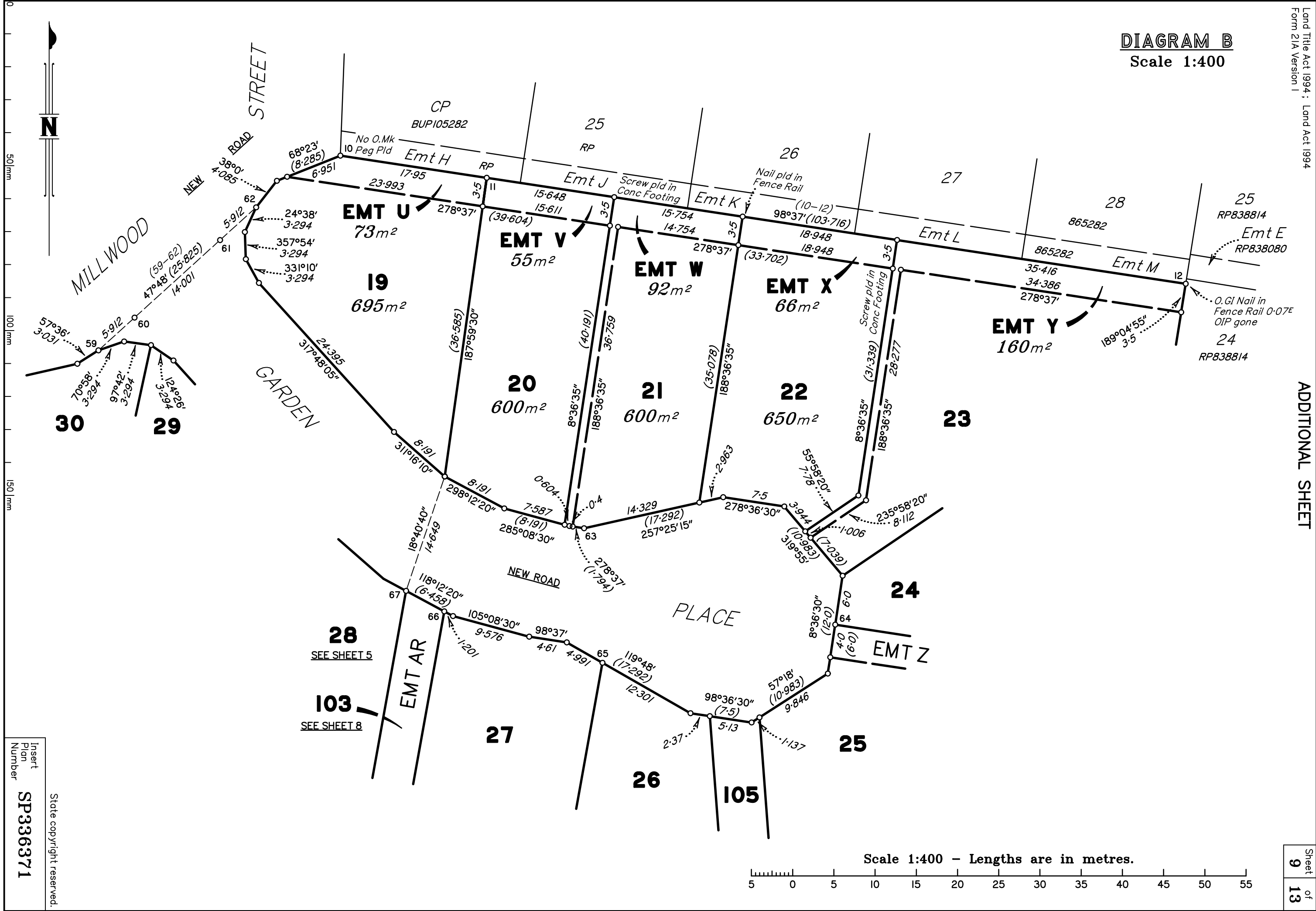


Insert
Plan
Number
SP336371

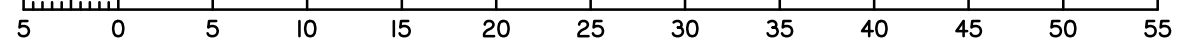
State copyright reserved.

DIAGRAM B
Scale 1:400

ADDITIONAL SHEET

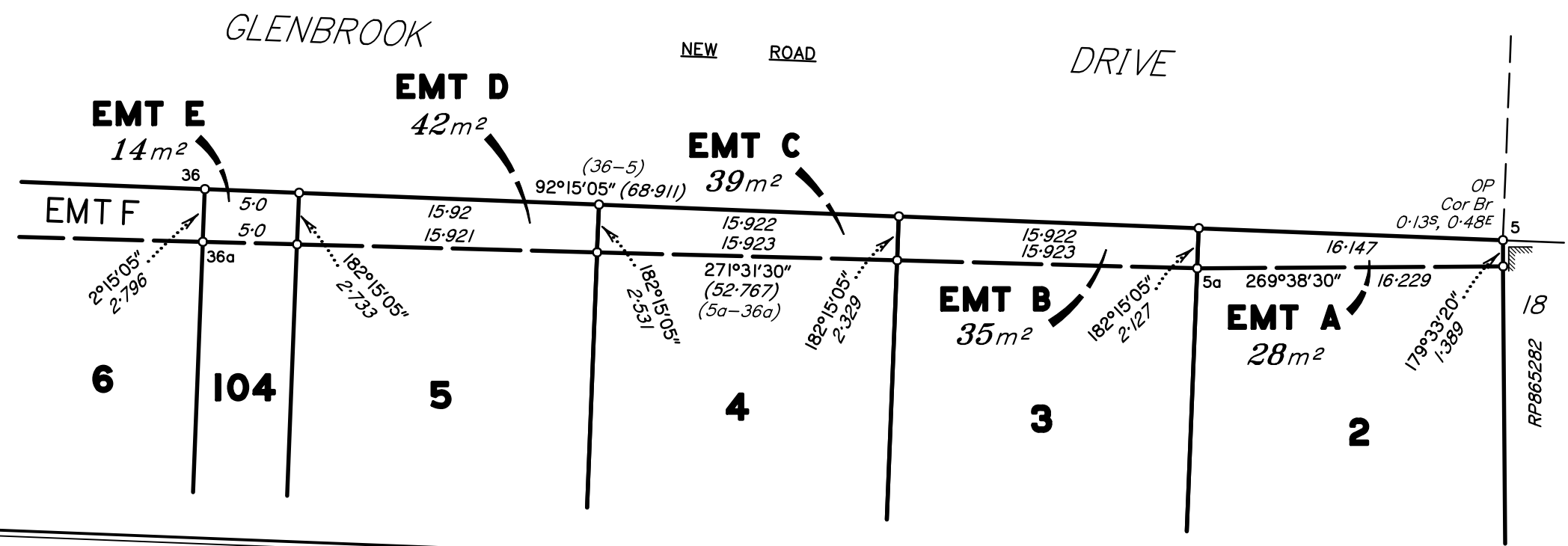


Scale 1:400 - Lengths are in metres.



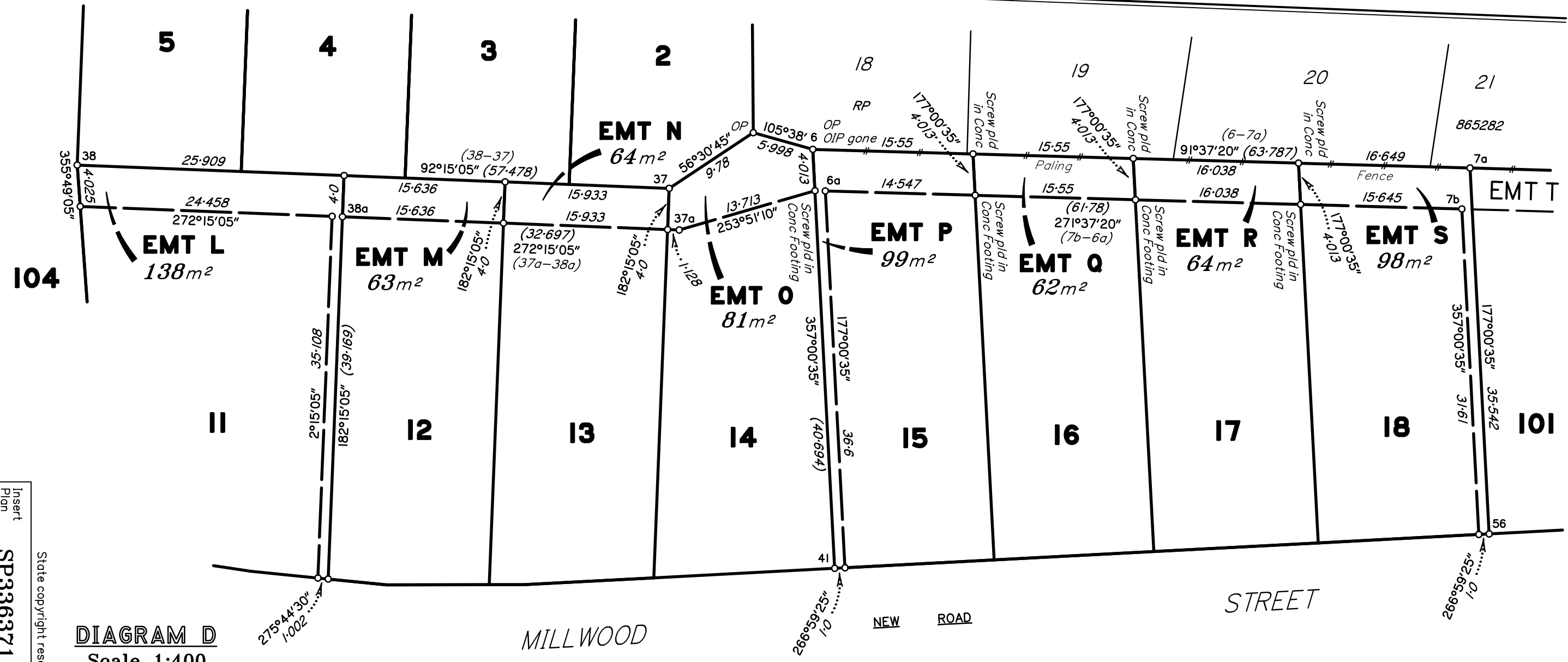
Insert
Plan
Number
SP336371
State copyright reserved.

DIAGRAM C
Scale 1:300



50mm
100mm
150mm

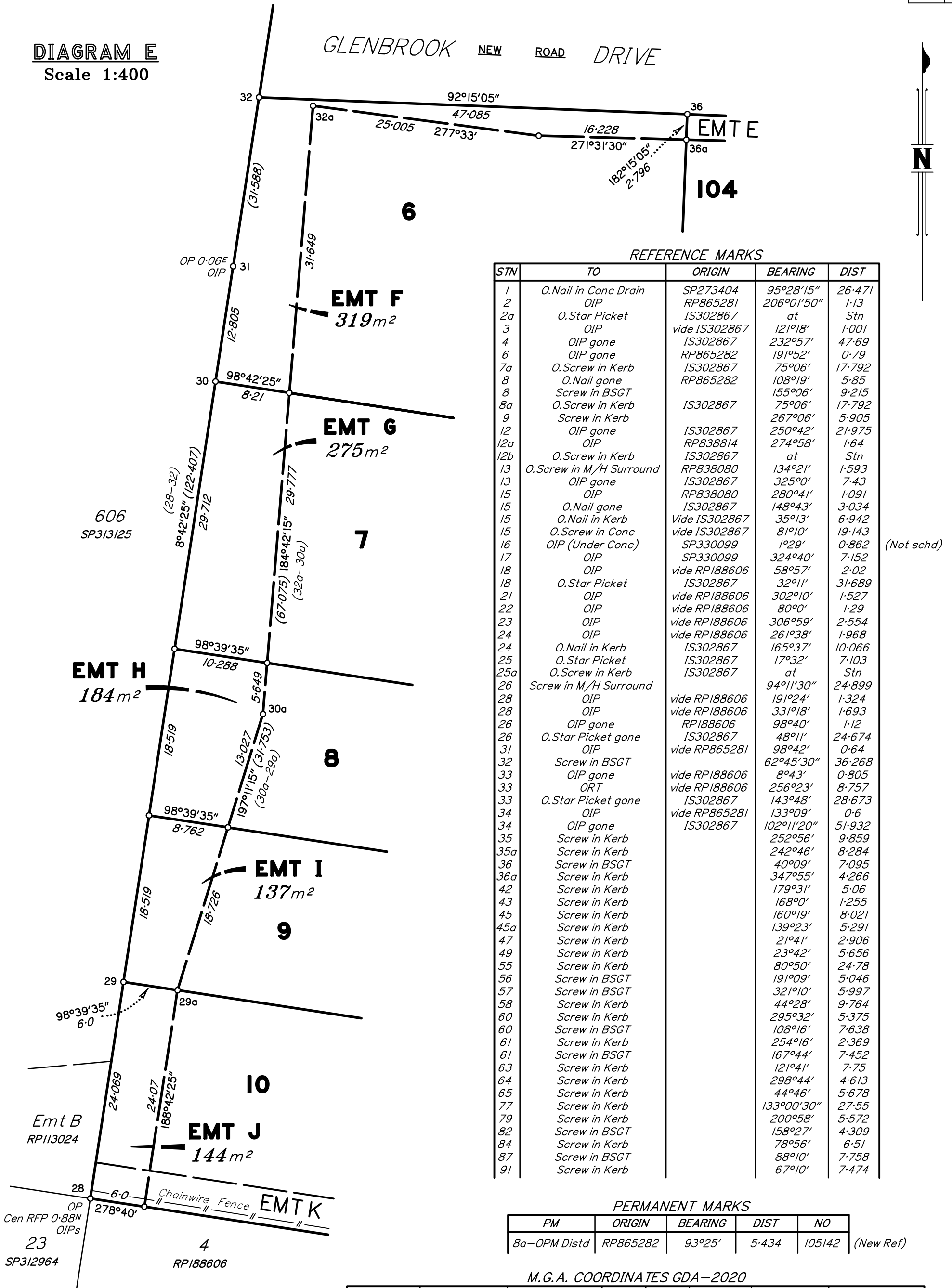
DIAGRAM D
Scale 1:400



Insert
Plan
Number
SP336371
State copyright reserved.

DIAGRAM E
Scale 1:400

GLENBROOK NEW ROAD DRIVE



REFERENCE MARKS

STN	TO	ORIGIN	BEARING	DIST
1	O.Nail in Conc Drain	SP273404	95°28'15"	26.471
2	OIP	RP865281	206°01'50"	1.13
2a	O.Star Picket	IS302867	at	Stn
3	OIP	vide IS302867	121°18'	1.001
4	OIP gone	IS302867	232°57'	47.69
6	OIP gone	RP865282	191°52'	0.79
7a	O.Screw in Kerb	IS302867	75°06'	17.792
8	O.Nail gone	RP865282	108°19'	5.85
8	Screw in BSGT		155°06'	9.215
8a	O.Screw in Kerb	IS302867	75°06'	17.792
9	Screw in Kerb		267°06'	5.905
12	OIP gone	IS302867	250°42'	21.975
12a	OIP	RP838814	274°58'	1.64
12b	O.Screw in Kerb	IS302867	at	Stn
13	O.Screw in M/H Surround	RP838080	134°21'	1.593
13	OIP gone	IS302867	325°0'	7.43
15	OIP	RP838080	280°41'	1.091
15	O.Nail gone	IS302867	148°43'	3.034
15	O.Nail in Kerb	Vide IS302867	35°13'	6.942
15	O.Screw in Conc	vide IS302867	81°10'	19.143
16	OIP (Under Conc)	SP330099	1°29'	0.862
17	OIP	SP330099	324°40'	7.152
18	OIP	vide RP188606	58°57'	2.02
18	O.Star Picket	IS302867	32°11'	31.689
21	OIP	vide RP188606	302°10'	1.527
22	OIP	vide RP188606	80°0'	1.29
23	OIP	vide RP188606	306°59'	2.554
24	OIP	vide RP188606	261°38'	1.968
24	O.Nail in Kerb	IS302867	165°37'	10.066
25	O.Star Picket	IS302867	17°32'	7.103
25a	O.Screw in Kerb	IS302867	at	Stn
26	Screw in M/H Surround		94°11'30"	24.899
28	OIP	vide RP188606	191°24'	1.324
28	OIP	vide RP188606	331°18'	1.693
26	OIP gone	RP188606	98°40'	1.12
26	O.Star Picket gone	IS302867	48°11'	24.674
31	OIP	vide RP865281	98°42'	0.64
32	Screw in BSGT		62°45'30"	36.268
33	OIP gone	vide RP188606	8°43'	0.805
33	ORT	vide RP188606	256°23'	8.757
33	O.Star Picket gone	IS302867	143°48'	28.673
34	OIP	vide RP865281	133°09'	0.6
34	OIP gone	IS302867	102°11'20"	51.932
35	Screw in Kerb		252°56'	9.859
35a	Screw in Kerb		242°46'	8.284
36	Screw in BSGT		40°09'	7.095
36a	Screw in Kerb		347°55'	4.266
42	Screw in Kerb		179°31'	5.06
43	Screw in Kerb		168°0'	1.255
45	Screw in Kerb		160°19'	8.021
45a	Screw in Kerb		139°23'	5.291
47	Screw in Kerb		21°41'	2.906
49	Screw in Kerb		23°42'	5.656
55	Screw in Kerb		80°50'	24.78
56	Screw in BSGT		191°09'	5.046
57	Screw in BSGT		321°10'	5.997
58	Screw in Kerb		44°28'	9.764
60	Screw in Kerb		295°32'	5.375
60	Screw in BSGT		108°16'	7.638
61	Screw in Kerb		254°16'	2.369
61	Screw in BSGT		167°44'	7.452
63	Screw in Kerb		121°41'	7.75
64	Screw in Kerb		298°44'	4.613
65	Screw in Kerb		44°46'	5.678
77	Screw in Kerb		133°00'30"	27.55
79	Screw in Kerb		200°58'	5.572
82	Screw in BSGT		158°27'	4.309
84	Screw in Kerb		78°56'	6.51
87	Screw in BSGT		88°10'	7.758
91	Screw in Kerb		67°10'	7.474

(Not schd)

PERMANENT MARKS

PM	ORIGIN	BEARING	DIST	NO
8a-OPM Distd	RP865282	93°25'	5.434	105142

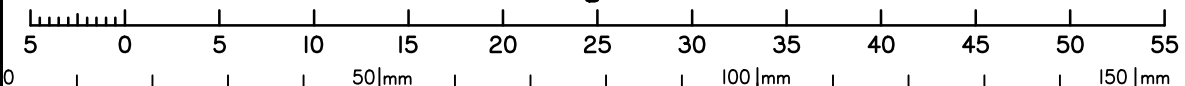
(New Ref)

M.G.A. COORDINATES GDA-2020

STATION	EASTING	NORTHING	ZONE	P.U.	LINEAGE	METHOD	REMARKS
2a	494 295.16	7 056 135.485	56	0.016	Derived	AUSPOS	Star Picket gone
12b	494 562.254	7 056 017.957	56	0.020	Derived	AUSPOS	O.Screw in Kb
25a	494 072.078	7 055 712.166	56	0.017	Derived	AUSPOS	O.Screw in Kb

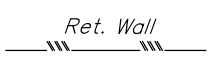
Scale 1:400 - Lengths are in metres.

State copyright reserved.



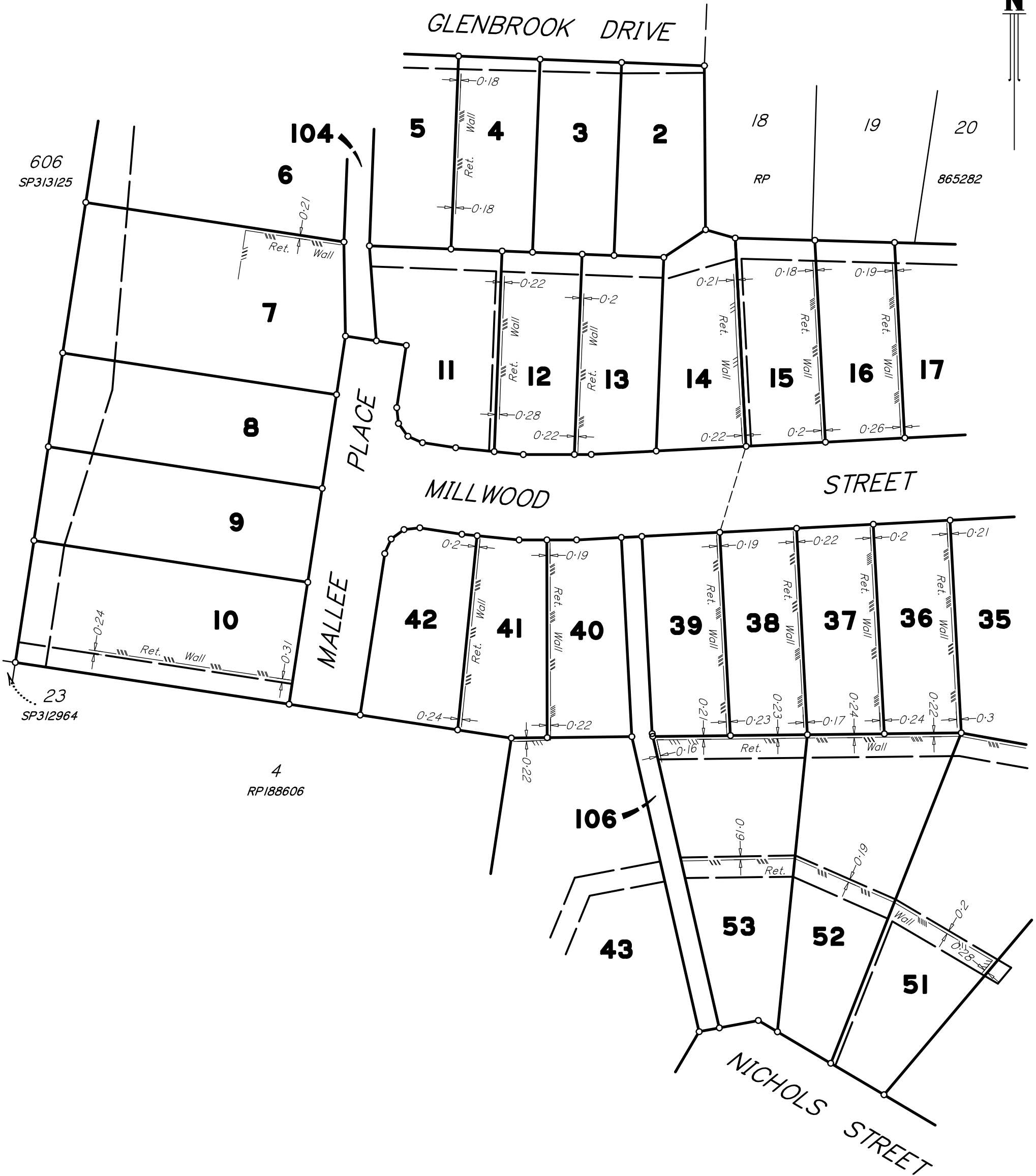
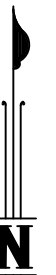
Insert Plan Number **SP336371**

SP100201.DWG

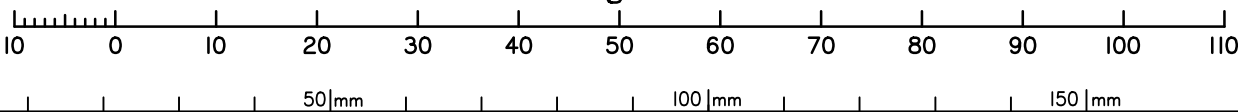


denotes top face of exposed side of concrete sleeper wall

At the time of survey further retaining walls were being constructed.



Scale 1:750 - Lengths are in metres.

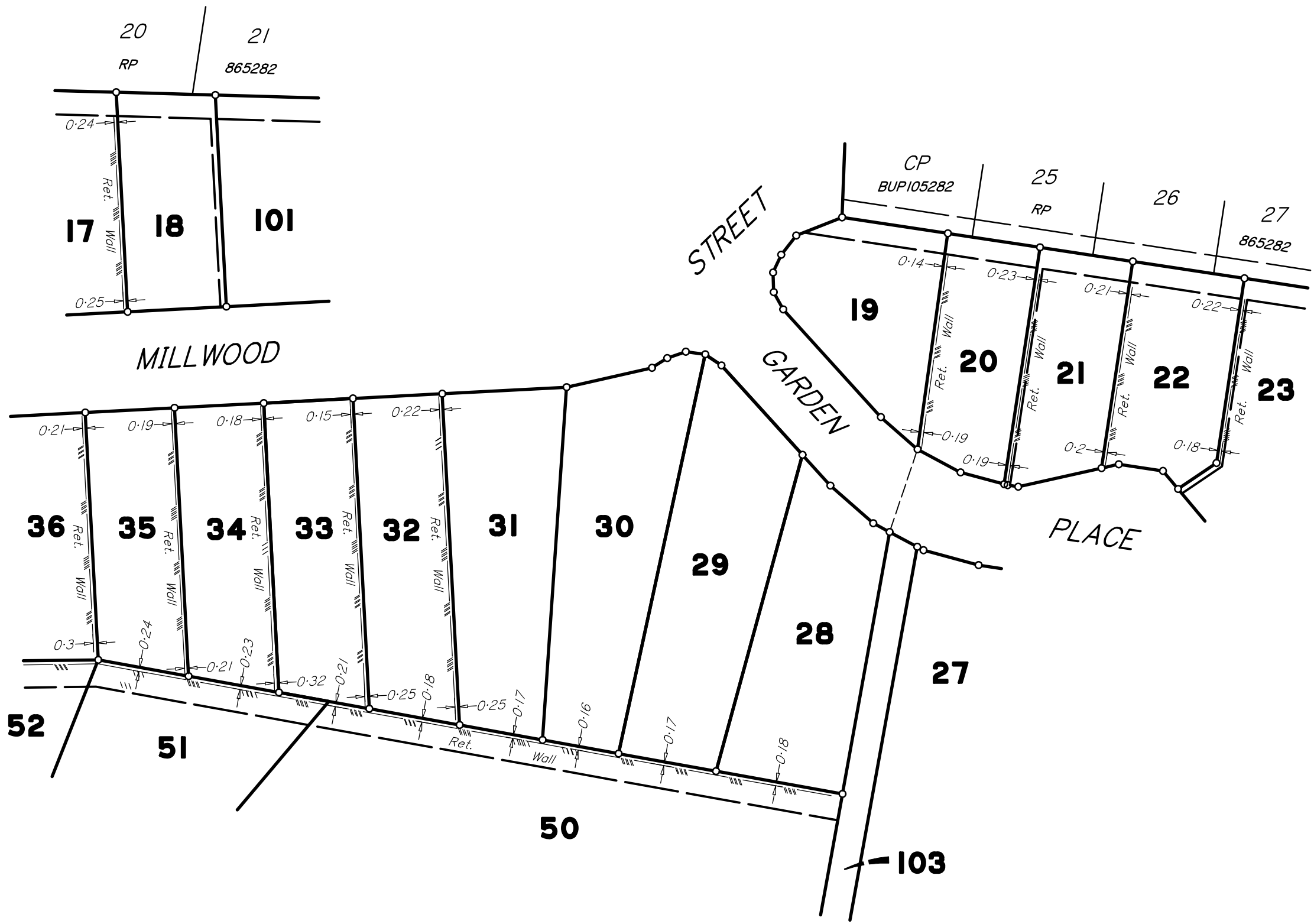


State copyright reserved.

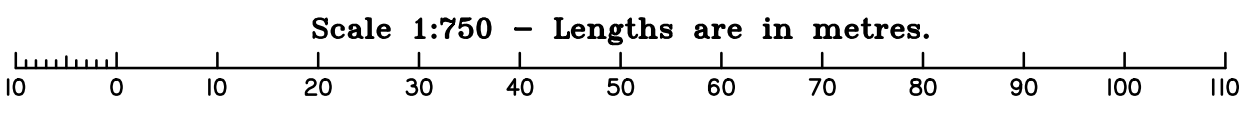
Insert Plan Number **SP336371**

S2100201.DWG

Ret. Wall denotes top face of exposed side of concrete sleeper wall



0
50 | mm
100 | mm
150 | mm



Insert
Plan
Number
SP336371
State copyright reserved.